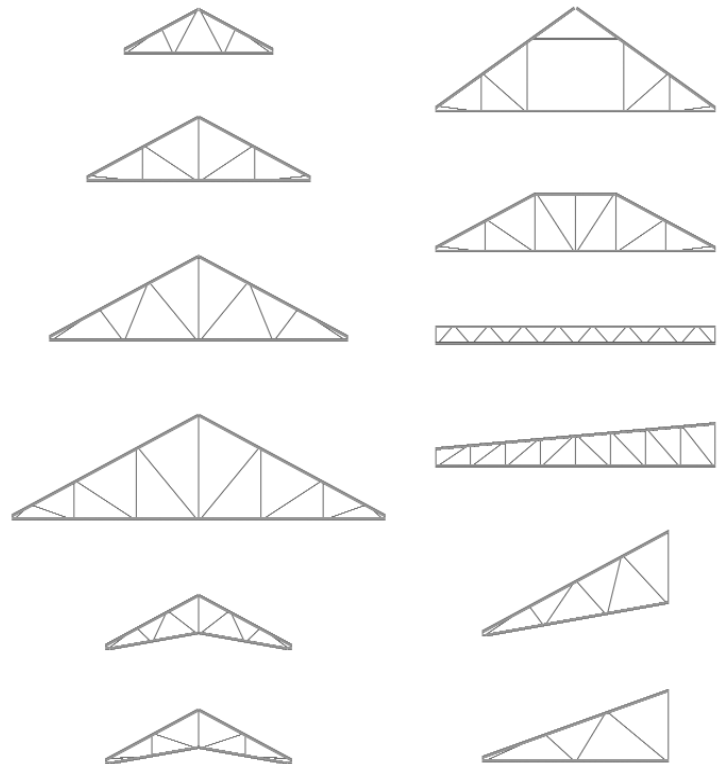




# Light Gauge Steel Trusses

As the use of Light Gauge Steel Trusses continues to grow in popularity among commercial building applications, the advantages become quite clear:

- Sturdy, light-weight product (Allows for ground assembly)
- Easy and fast to erect
- Design flexibility
- Pre-engineered and prefabricated
- UL rated assemblies to save on fire protection



## Why Use Douglass Colony Group?

- Douglass was the first TrusSteel fabricator in the nation to design and fabricate a radius truss job with bent cords
- Douglass offers a superior product. TrusSteel chord and web material allows for the most rigid truss system available anywhere
- Douglass focuses on flawless service from start to finish complete with site visits and one point of contact
- The Truss staff division at Douglass has over 50 years combined years of experience with the truss industry

***We've Got You Covered From the Ground Up!***

**Give Us a Call Today!**

**(303)288-2635 or Toll Free at 1(877)288-0650**